



IACUC Policy 200 : Education and Training for the Humane Care and Use of Animals in Research, Teaching and Testing

The intent of this policy is to describe the requirements for education and training for personnel involved in the care and use of animals for research, teaching and testing at Thammasat University.

Table of Contents

- 1) Policy and Training Requirements
 - A. Introduction Training Module
 - B. Training Requirements
 - 1. Personnel named on Animal Care and Use protocols
 - 2. IACUC members
 - 3. Animal Care Staff
 - 4. Maintenance and Custodial Workers
 - 5. All Visitors
- 2) Regulatory Mandates and Guidelines

1) Policy and Training Requirements

All personnel utilizing and/or handling animals for research, teaching and testing at Thammasat University must be adequately trained, educated and/or qualified in the principles of animal science and safety, the specific procedures that they are expected to perform with the species of animals being used, their roles and responsibilities in ensuring the humane care and use of animals, and the ethical principles and University policies and procedures governing the use of animals in research, testing and teaching.

Training requirements for personnel involved in animal care and use are determined by the Institutional Animal Care and Use Committee (IACUC). The IACUC is responsible for ensuring ongoing compliance with those requirements. Laboratory Animal Center, Thammasat University (LAC-TU) is responsible for managing the training and education of the animal users.

A. Introduction Training Module

Module 1: Ethical Principles and Guidelines for the Animals Use and Care training

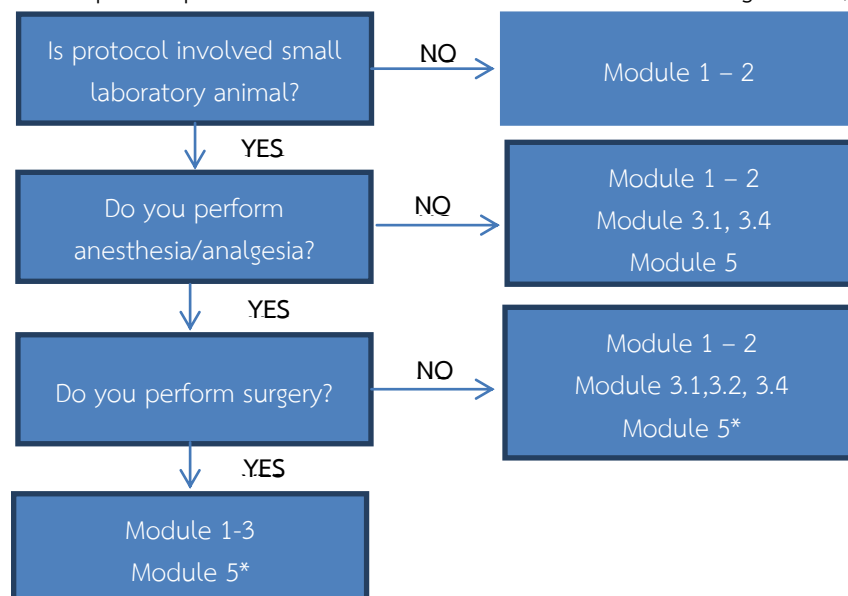
- Module 2: Occupational Health and Safety in the Care and Use of Research Animals
- Module 3: Procedure Specific Training (Step 1: Lecture Step 2: Hand-on*)
 - 3.1 Basic technique: Restraint, Sexing, Identification, Administration, Sampling, Necropsy
 - 3.2 Anesthesia and analgesia in small laboratory animal
 - 3.3 Surgery in small laboratory animal
 - 3.4 Euthanasia Methods
- Module 4: IACUC role/procedure consideration
- Module 5**: LAC-TU Orientation

*Step 2 Hand on training conducts after protocol approval only personnel who do not previously have train.

**Step 5 For personnel who conducts activities at Laboratory Animal Center, Thammasat University

B. Training Requirements: The training requirements set by the IACUC are based on 1) the procedures the individual will perform, 2) the species that will be used and 3) special considerations related to the role of the person in the animal care and use program. All personnel working with animals must ordinarily complete the assigned mandatory training before they can begin work with animals.

1. Personnel named on Animal Care and Use protocols: All personnel named on an animal care and use protocol must be participated and passed in training that related with response procedure. Find out decision tree to training below;



2. IACUC members

- IACUC members must complete in Module 1,2 and 4
- New IACUC members meet with the IACUC Chair, IACUC staff, the Attending Veterinarian and others if required, to learn about the related regulatory requirements and University and IACUC policies, the role of the IACUC, their responsibilities as IACUC members, and tactical information on how to perform the functions required of them as IACUC members.
- Members are encouraged to attend related training and information seminars and courses offered by National Research Council of Thailand (NRCT) or other reputable organizations and regulatory agencies.
- Continuing education on relevant topics (e.g., new or updated regulatory requirements and guidance, contemporary issues in animal care and use) is provided at IACUC meetings or otherwise distributed to the members.

3. Animal Care Staff: are required to complete training before they can start work with live animals.

- Animal Care Staff must complete in Module 1 and 2
- Module 3 Additional relevant procedure specific training as assigned by Attending Veterinarian.

4. Maintenance and Custodial Workers

- Attending Veterinarian (AV) or Clinical Veterinarian (CV) is responsible for meeting with maintenance or custodial workers and providing them with necessary information on circulation of people and equipment, personal protective equipment, and any other issues of importance related to the facility. AV or CV is responsible for documenting this training and making the information and recording at LAC-TU.

5. All Visitors

- All Visitors must complete in Module 5. and recording at LAC-TU.

2) Regulatory Mandates and Guidelines

A. Ethical Principles and Guidelines for the Use of Animals

B. ANIMALS FOR SCIENTIFIC PURPOSES ACT, B.E. 2558 (A.D. 2015)

C. GUIDE LABORATORY ANIMALS FOR THE CARE AND USE OF Eighth Edition, NRC, 2011

D. Guide for the Care and Use of Agricultural Animals in Agricultural Research and Teaching: Third edition, FASS. 2010.

E. AVMA Guidelines for the Euthanasia of Animals. 2013 Edition